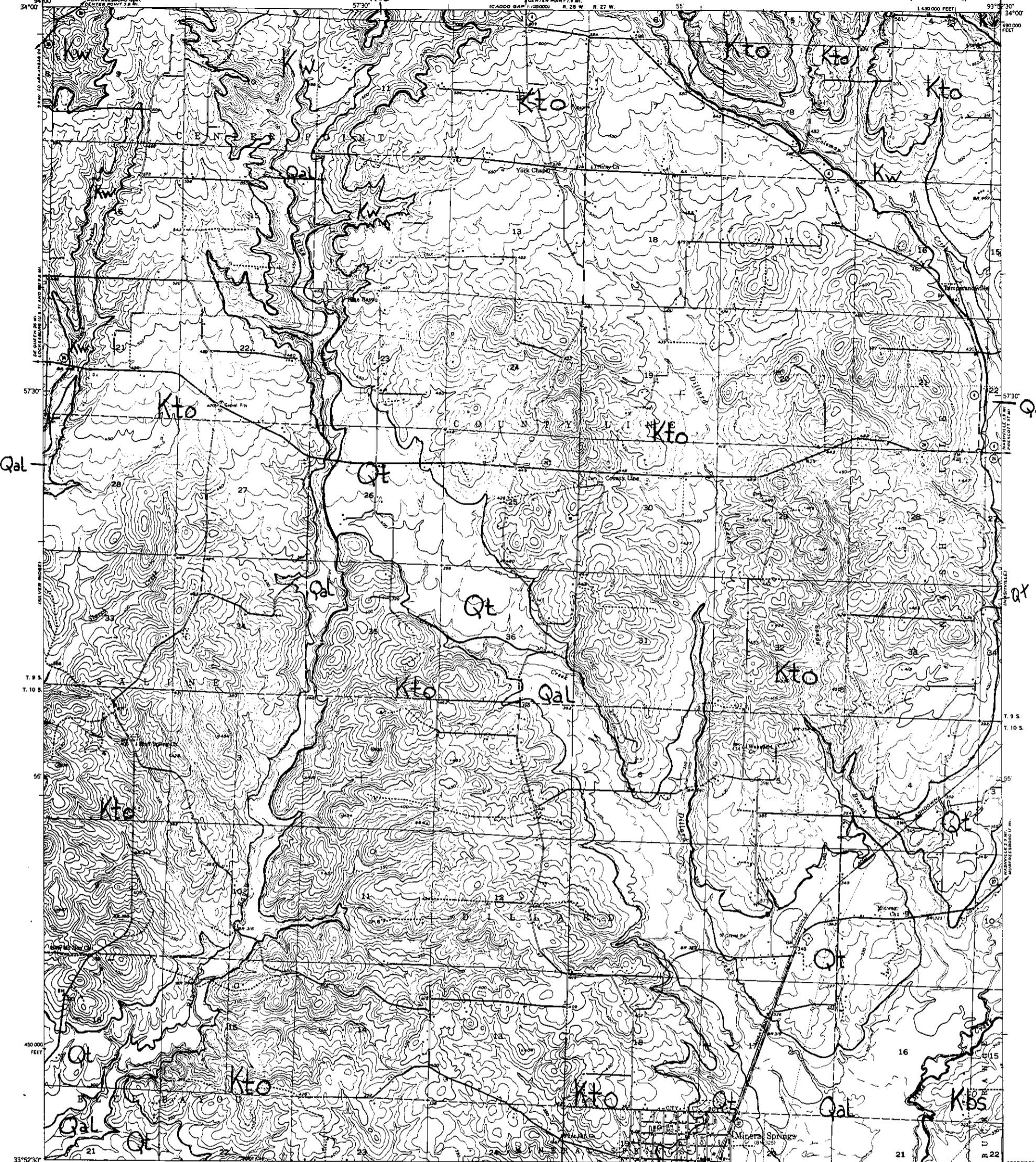
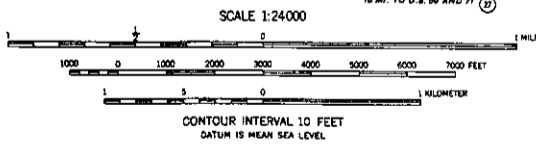


Reduce this line to this line



Mapped, edited, and published by the Geological Survey
Control by USGS and USC&GS
Culture and drainage in part compiled from aerial photographs taken 1949. Topography by plane-table methods 1951.
Polyconic projection. 1927 North American datum. 10,000-foot grid based on Arkansas coordinate system, south zone.



Clardy - Bush
ROAD CLASSIFICATION
Heavy-duty 2 LANE BLANK Light-duty 1 LANE BLANK
Medium-duty 2 LANE BLANK Unimproved dirt 1 LANE BLANK
U.S. Route State Route

MASTER COPY

THIS MAP COMPLIES WITH NATIONAL MAP ACCURACY STANDARDS
FOR SALE BY U.S. GEOLOGICAL SURVEY, FEDERAL CENTER, DENVER, COLORADO OR WASHINGTON 25, D. C.
AND BY THE ARKANSAS RESOURCES AND DEVELOPMENT COMMISSION, LITTLE ROCK, ARKANSAS
A FOLDER DESCRIBING TOPOGRAPHIC MAPS AND SYMBOLS IS AVAILABLE ON REQUEST

MINERAL SPRINGS NORTH, ARK.
N3352.5-W9352.5/7.5
1951

Clardy - Bush

3